

Product data sheet

Specifications



APC Back-UPS, 1050VA/600W, Floor/Wall Mount, 120V, 8x NEMA 5-15R outlets, USB Type A + C Ports

BE1050G3

Main

Main input voltage	120 V AC 1 phase
Input connection	NEMA 5-15P
Efficiency at full load	92...139 V
Input frequency	50/60 Hz +/- 3 Hz auto-sensing
Output voltage	120 V AC 1 phase
Rated power in W	600 W
Rated power in VA	1050 VA
Output connection	6 NEMA 5-15R 2 NEMA 5-15R surge
USB charging port	USB type A + C
Maximum configurable power in VA	1050 VA
Maximum configurable power in W	600 W
Transfer time	6ms typical : 10ms maximum
UPS topology	Standby
Waveform type	Stepped approximation to a sinewave
Output frequency	50/60 Hz +/- 3 Hz sync to mains
Replacement battery	APCRBC164

Graphs

Run Time	View Runtime Graph
Efficiency	View Efficiency Graph

Complementary

Battery type	Lead-acid internal included
Control panel	LED Status display with On Line : On Battery
Alarm	Alarm when on battery : distinctive low battery alarm : overload continuous tone alarm
UPS connectivity	USB port
Surge energy rating	490 J
Cable length	5 ft (1.5 m)
Number of cables	1
Color	Black and white

Price is "List Price" and may be subject to a trade discount – check with your local distributor or retailer for actual price.

Height	3.5 in (90 mm)
Width	6.6 in (167 mm)
Depth	12.5 in (318 mm)
Product weight	9.5 lb(US) (4.3 kg)
Mounting preference	No preference
Mounting mode	Not rack-mountable
Two post mountable	0
USB compatible	Yes
Mounting mode	Wall mount
Provided equipment	User Manual USB cable
Number of power module filled slots	0
Number of power module free slots	0
Redundant	No
Range of product	Back-UPS
Product or component type	Uninterruptible power supply (UPS)

Environment

Product certification	cTUVus ENERGY STAR V2.0 (USA)
Ambient air temperature for operation	32...104 °F (0...40 °C)
Ambient air temperature for storage	5...113 °F (-15...45 °C)
Storage altitude	0...50000 ft (0...15240 m)
Relative humidity	0...95 %
Storage relative humidity	10...90 %
Acoustic level	45 dBA
Heat dissipation	19.249 Btu/h
Operating altitude	0...10000 ft

Batteries & Runtime

Battery type	Lead-Acid battery
Battery graph comment	This graph is based on actual measured runtime data. All measurements were taken with new, fully charged batteries and a balanced resistive load (PF = 1.0). Actual runtimes may vary from the values of this graph. Actual runtimes are dependent on several variables including battery age, battery charge level, environmental conditions and characteristics of the connected load.
Extendable runtime	0
Included battery module	0
Empty battery slot	0
Typical recharge time	8 h
Battery life	2...5 year(s)
Battery charging power	13 W rated

Ordering and shipping details

GTIN	731304625384
------	--------------

Packing Units

Unit Type of Package 1	PCE
Nbr. of units in pkg.	1
Package 1 Height	8.9 in (22.5 cm)
Package 1 Width	6.06 in (15.4 cm)
Package 1 Length	15.04 in (38.2 cm)
Package weight(Lbs)	10.6 lb(US) (4.8 kg)
SCC14	10731304625381

Contractual warranty

Warranty (in months)	36 UPS 12 Battery
----------------------	-------------------



Environmental Data

Schneider Electric aims to achieve Net Zero status by 2050 through supply chain partnerships, lower impact materials, and circularity via our ongoing “Use Better, Use Longer, Use Again” campaign to extend product lifetimes and recyclability.

[Environmental Data explained >](#)

[How we assess product sustainability >](#)



Environmental footprint

Total lifecycle Carbon footprint	171 kg CO2 eq.
Carbon footprint of the manufacturing phase [A1 to A3]	46 kg CO2 eq.
Carbon footprint of the distribution phase [A4]	0.5 kg CO2 eq.
Carbon footprint of the installation phase [A5]	0 kg CO2 eq.
Carbon footprint of the use phase [B2, B3, B4, B6]	124 kg CO2 eq.
Carbon footprint of the end-of-life phase [C1 to C4]	0.4 kg CO2 eq.
Environmental Disclosure	Product Environmental Profile

Use Better



Materials and Substances

Packaging made with recycled cardboard	No
Packaging without single use plastic	No
EU RoHS Directive	Compliant By Exemption
REACH Regulation	Reference contains Substances of Very High Concern above the threshold



Energy efficiency

Optimized Energy Efficiency	Energy efficient product
ENERGY STAR®	ENERGY STAR UPS V2.0 (USA)

Use Longer



Lifetime extension

Repair	No
--------	----

Use Again

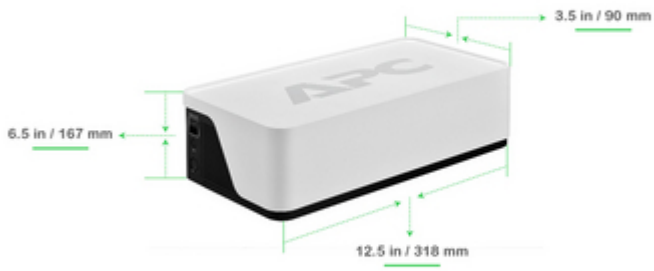


Repack and remanufacture

Recyclability potential, in %	62
Circularity Profile	End of Life Information
Removable battery	User replaceable
Take-back	Yes

Technical Illustration





Dimensions



Offer Marketing Illustration

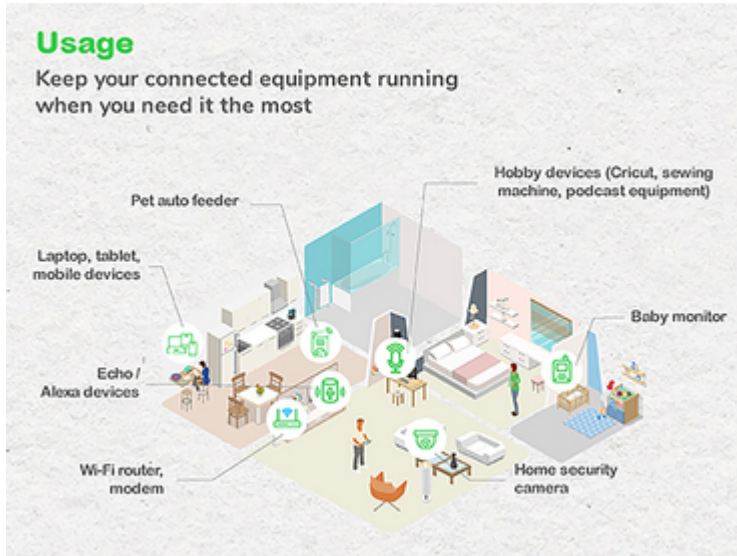
Product benefits / Features

Why use APC's Next Gen BE series?

 <p>Keep your equipment powered during outages and protect them against surges, spikes, and lightning</p>	 <p>2 USB (Type A + Type C) charging</p>
 <p>ENERGY STAR® V2.0 (USA) certified UPS with energy monitoring and configuration options</p>	 <p>Over 100 mins of uninterrupted internet connectivity</p>

Offer Marketing Illustration

Product benefits / Features



Offer Marketing Illustration

Product benefits / Features



Offer Marketing Illustration

Product benefits / Features



Offer Marketing Illustration

Product benefits / Features

Runtime



20W

Entry-Level desktop

170 mins



79W

Notebook computer

44 mins



119W

Mid-range PC

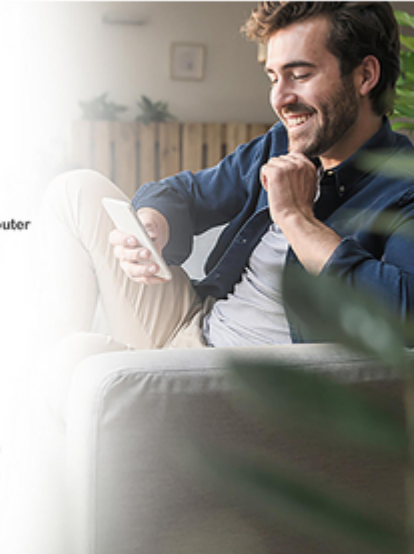
29 mins



240W

Gaming PC

11 mins



Offer Marketing Illustration

Product benefits / Features



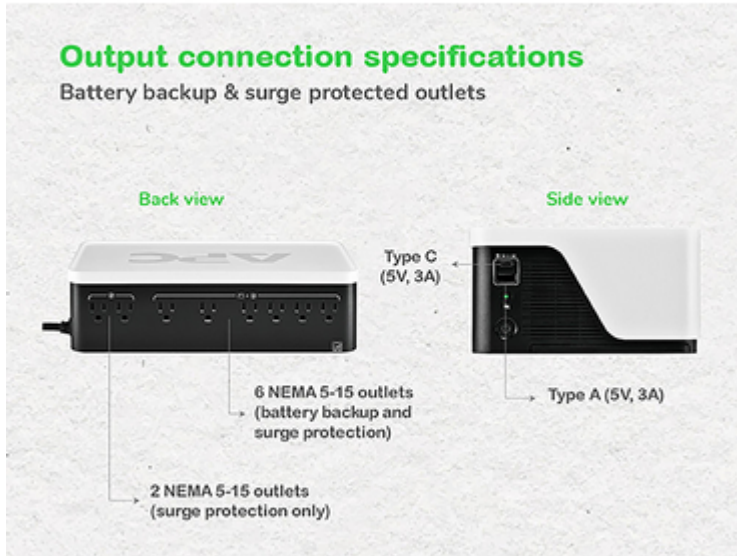
Offer Marketing Illustration

Product benefits / Features



Offer Marketing Illustration

Product benefits / Features



Offer Marketing Illustration

Product benefits / Features




Offer Marketing Illustration

Product benefits / Features

Easy-to-understand user interface for UPS status

- UPS is operating normally
- UPS operation needs attention
- UPS is overloaded, battery must be replaced, or battery is not working



Offer Marketing Illustration

Product benefits / Features




Eco-friendly

- Compact design allows you to get the most out of power protection for a lower footprint
- UPS made from lower impact materials
- Sustainable packaging
- PowerChute™ Serial Shutdown Software for energy monitoring and configuration
- User replaceable battery

Image of product / Alternate images

Alternative

